

Smart Forest Guardian: AI-Powered Footprint Recognition and Poaching Detection

Ms.Maddelabhargavi¹, Chetan D², Darshan G³, Dhanush J⁴, Ganesh M⁵ Assistant Professor,
Dept of CSE, KSIT, Karnataka, India¹
Student, Dept of CSE, KSIT, Karnataka, India²⁻⁵

Abstract - Animal footprint identification plays a significant role in wildlife monitoring, species conservation, and environmental research. Traditional methods of footprint analysis require expert observation and are often time-consuming and prone to inaccuracies. This paper proposes a deep learning-based Animal Footprint Classification System that automatically identifies footprints of different animals such as cows, cats, rabbits, squirrels, and elephants using Convolutional Neural Networks (CNNs). The system uses labeled and preprocessed footprint images along with image augmentation techniques to improve classification accuracy under varying environmental conditions. The proposed system integrates preprocessing, feature extraction, classification, and real-time prediction into a user-friendly web application. CNN models are trained to recognize unique footprint patterns based on shape, texture, and edge characteristics. The system achieves high accuracy in identifying animal footprints and provides rapid predictions through image uploads. By combining deep learning techniques with web technologies, the proposed solution offers an efficient and non-intrusive approach for wildlife monitoring, animal tracking, and ecological studies.

Key Words: Animal Footprint Classification, Deep Learning, Convolutional Neural Network, Image Processing, Wildlife Monitoring, Footprint Detection, Web Application, Image Classification

1. INTRODUCTION

Animal footprint analysis has long been used as an important method for understanding animal movement, behavior, and habitat usage. Wildlife researchers and conservationists rely on footprint identification to monitor species distribution and ecological activity. However, traditional manual identification methods require expert knowledge and are often slow, inconsistent, and difficult to scale for large datasets.

Recent advancements in deep learning and computer vision have significantly improved image classification tasks by enabling automatic feature extraction and pattern recognition. Convolutional Neural Networks (CNNs), in particular, have demonstrated excellent performance in identifying complex image patterns with high accuracy. These technologies provide an opportunity to automate the process of animal footprint recognition and improve reliability in wildlife monitoring systems.

To address these challenges, a deep learning-based Animal Footprint Classification System is proposed. The system is designed to identify and classify animal footprints from uploaded images using CNN-based image classification techniques. The model is trained using labeled images of footprints from different animal species including cows, cats, rabbits, squirrels, and elephants.

The proposed system performs preprocessing operations such as resizing, grayscale conversion, noise reduction, and image augmentation to improve classification performance. It also integrates a web-based interface that allows users to upload footprint images and obtain real-time predictions. By combining deep learning algorithms with image processing and web technologies, the system provides an efficient, accurate, and user-friendly solution for automatic animal footprint identification.

Furthermore, the proposed system contributes to wildlife conservation and ecological studies by enabling faster and more reliable footprint analysis. It reduces dependency on manual observation while improving scalability and accessibility for researchers and environmental monitoring applications.

2. Problem Statement

The lack of accessible and reliable assistance services for elderly individuals has become a significant issue. Senior citizens often struggle to perform daily tasks independently due to mobility constraints and health conditions. Family members are not always available to provide support, leading to dependence and reduced quality of life.

Existing platforms do not provide a comprehensive solution that includes real-time booking, monitoring, and safety features. Many systems lack proper verification of service providers and do not offer tracking or emergency support. This results in safety concerns and reduced trust among users.

Therefore, there is a need for a smart, secure, and user-friendly system that can provide on-demand assistance, ensure safety, and improve the overall experience for elderly individuals

3. Objectives

1. To develop a deep learning-based system for automatic animal footprint classification.
2. To preprocess and enhance footprint images for improved recognition accuracy.
3. To improve wildlife monitoring and ecological research through automated footprint analysis.
4. To provide real-time footprint prediction through a web-based application.

4. Literature Review

1) Animal Footprint Identification Systems

Existing studies focus on recognizing animal footprints using image processing and machine learning techniques. These systems improve species monitoring but often lack scalability and real-time prediction capabilities.

2) Deep Learning-Based Image Classification

Deep learning models such as Convolutional Neural Networks have shown high accuracy in image classification tasks by automatically extracting complex image features. These methods improve recognition performance compared to traditional algorithms.

3) Wildlife Monitoring Systems

Wildlife monitoring systems use computer vision and tracking technologies to study animal behavior and movement patterns. However, many systems depend heavily on manual analysis and expert interpretation.

4) Research Gap

Most existing solutions focus either on general image classification or traditional footprint analysis techniques. There is a lack of integrated systems that combine deep learning, preprocessing, real-time classification, and web-based accessibility specifically for animal footprint identification. This gap motivates the development of the proposed system.

5. Proposed System

The proposed system is a deep learning-based Animal Footprint Classification System designed to automatically identify animal footprints from uploaded images. The system integrates image preprocessing, feature extraction, classification, and prediction modules to ensure accurate and efficient footprint recognition.

1) System Overview

The system allows users to upload animal footprint images through a web application. The uploaded image undergoes preprocessing and is then analyzed using a trained CNN model to classify the footprint into the corresponding animal category.

2) Core Functional Components

- **User Interface:** Enables users to upload footprint images and view predictions
- **Backend Server:** Handles image processing and classification logic
- **Database:** Stores dataset information and prediction records
- **CNN Model:** Performs feature extraction and footprint classification
- **Prediction Module:** Displays classification results in real time

3) Classification Logic

The system assigns companions based on:

- Shape characteristics
- Texture patterns
- Edge features

This ensures accurate identification of animal footprints under different conditions.

4) System Workflow

1. User uploads footprint image

2. Image preprocessing is performed
3. Features are extracted using CNN
4. Model classifies the footprint
5. Prediction result is displayed
6. User can upload another image for analysis

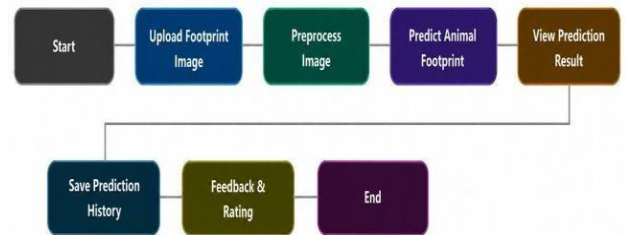


Fig -1: System Workflow

6. Methodology

The methodology of the proposed system focuses on applying deep learning and image processing techniques for efficient animal footprint classification. The system follows a structured approach to ensure accurate prediction and reliable performance.

1.Data Collection

The dataset consists of labeled animal footprint images collected from publicly available sources. Images of footprints from cows, cats, rabbits, squirrels, and elephants are organized into training and testing datasets.

2.Image Preprocessing

The uploaded images are resized, converted to grayscale, normalized, and processed to remove noise. Image augmentation techniques such as rotation, scaling, and brightness adjustments are applied to improve model robustness.

3.Feature Extraction

Important footprint characteristics such as edges, texture, and shape are extracted using convolutional layers in the CNN model. These features help distinguish footprints of different animal species.

4.Model Training

The CNN model is trained using the processed dataset over multiple epochs to improve classification accuracy. The model learns unique footprint patterns associated with each animal class.

5.Prediction and Classification

The trained model processes uploaded test images and predicts the corresponding animal species based on learned features and classification probabilities.

7. System Architecture

The system architecture follows a modular design consisting of:

- **Frontend Layer:** Provides user interaction for image upload and prediction display
- **Backend Layer:** Handles preprocessing, prediction, and application logic
- **Database Layer:** Stores dataset details and classification records
- **CNN Processing Module:** Performs feature extraction and classification
- **Prediction Module:** Generates and displays real-time results

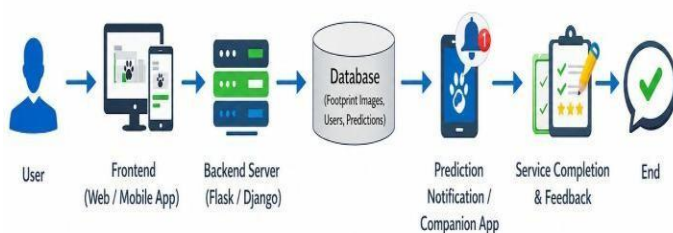


Fig -2: System Architecture Diagram

8. Result And Discussion

The proposed system successfully classifies animal footprints using deep learning techniques with high prediction accuracy. The CNN-based model demonstrates efficient feature extraction and accurate classification across multiple animal categories.

The preprocessing techniques and image augmentation methods improve the robustness of the system under varying environmental conditions such as lighting, angle, and image quality. The model effectively identifies footprint patterns based on shape and texture features.

The integration of a web-based interface enables users to upload images and receive real-time predictions, making the system more accessible and user-friendly.

Experimental results show that the CNN model performs better compared to traditional machine learning algorithms in footprint classification tasks.

Additionally, the system supports faster wildlife monitoring and reduces dependency on manual footprint analysis. The proposed approach improves reliability, scalability, and efficiency in animal footprint recognition applications.

9. Future Work

Future enhancements of the system include:

- Future enhancements of the system include:
- Integration of real-time camera-based footprint detection
- Expansion of dataset with additional animal species
- Mobile application support for field usage
- Advanced segmentation and object detection techniques
- Cloud-based deployment for scalable wildlife monitoring

10. CONCLUSIONS

The proposed Animal Footprint Classification System provides an efficient and accurate solution for automatic footprint recognition using deep learning techniques. By integrating image preprocessing, feature extraction, CNN-based classification, and web technologies, the system successfully identifies animal footprints with high accuracy.

The system reduces dependency on manual observation and provides faster, scalable, and more reliable wildlife monitoring capabilities. It supports ecological research, conservation activities, and environmental studies by enabling automated footprint analysis.

Furthermore, the integration of a user-friendly web application improves accessibility and practical usability for researchers and conservationists. With future enhancements such as real-time detection and expanded datasets, the proposed system has the potential to become a powerful tool for intelligent wildlife monitoring and animal tracking applications.

ACKNOWLEDGEMENT

We express our sincere gratitude to our guide, Ms.Maddelabargavi, for her continuous support and guidance throughout the development of this project. We also thank the faculty of the Department of Computer Science and Engineering for their encouragement and valuable suggestions.

REFERENCES

1. Sinchana A et al., "A Deep Learning Approach to Animal Footprint Classification," IEEE ICICCS, 2025.
2. Kavitha et al., "Identification of an Animal Footprint with Time Prediction Using Deep Learning," IEEE ICCMC, 2023.
3. Mohammed Nazir Alli et al., "Animal Identification Based on Footprint Recognition," IEEE Conference on Computing and Communication Technologies, 2013.
4. Roopa Devi E M et al., "Wild Animal Recognition using Deep Learning Models," IEEE ICCNT, 2024.